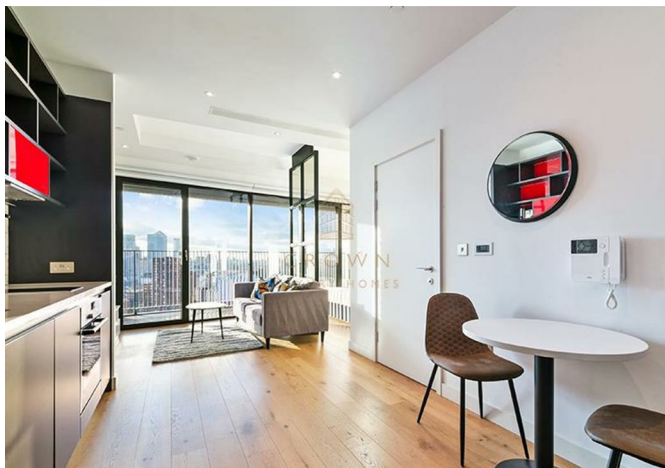


2308 Corson House 157 City Island Way, London, E14 0TQ  
£2,145





2308 Corson House 157 City Island Way, London, E14 0TQ

£2,145

Prefer to communicate in Chinese? Connect with our China Desk on WeChat at CLH-Hannah. Situated on the 23rd floor of the prestigious City Island development, this exquisite Manhattan-style apartment boasts sweeping views of Canary Wharf, the River Thames, and the iconic city skyline.



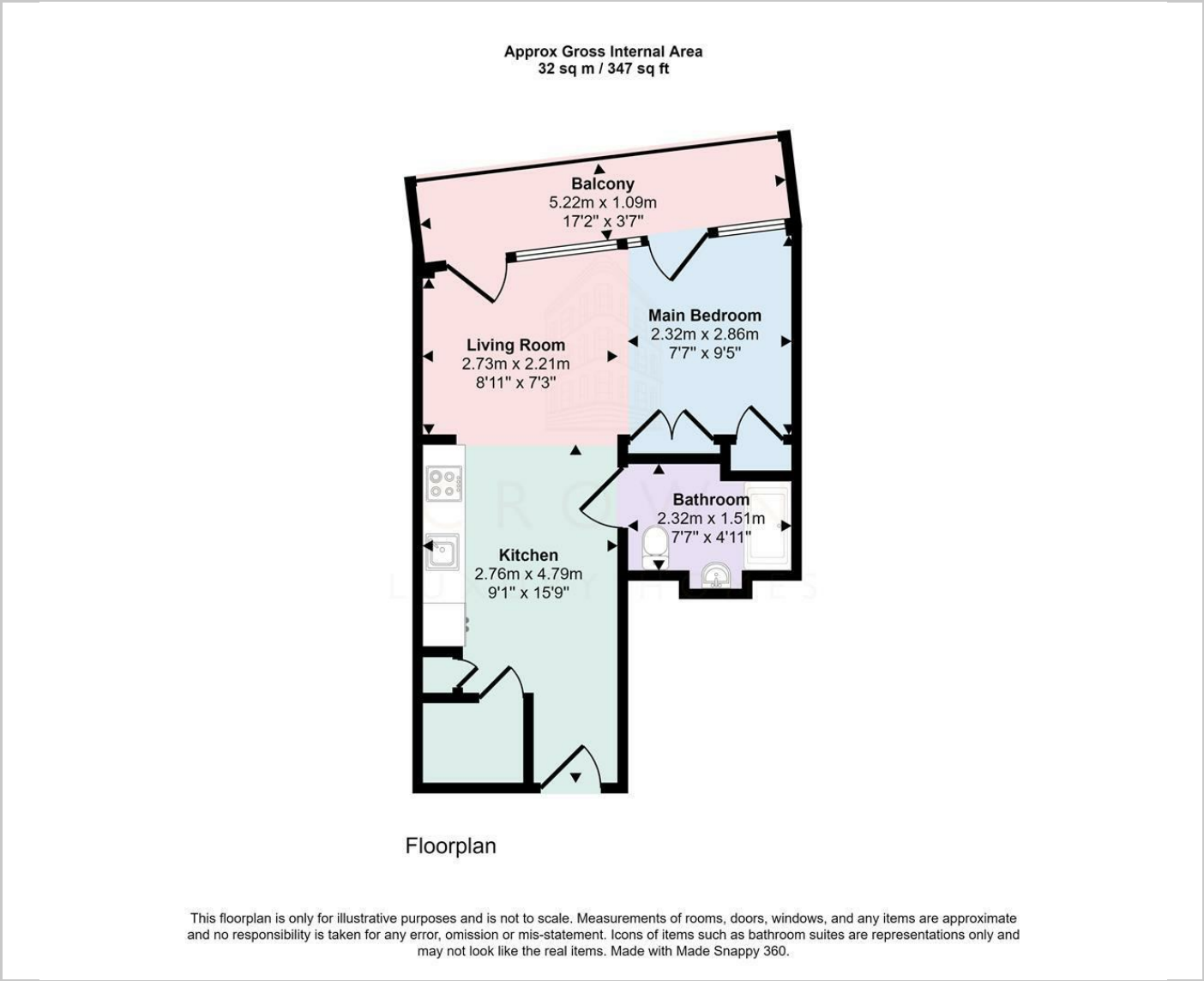
## Description

## Situation

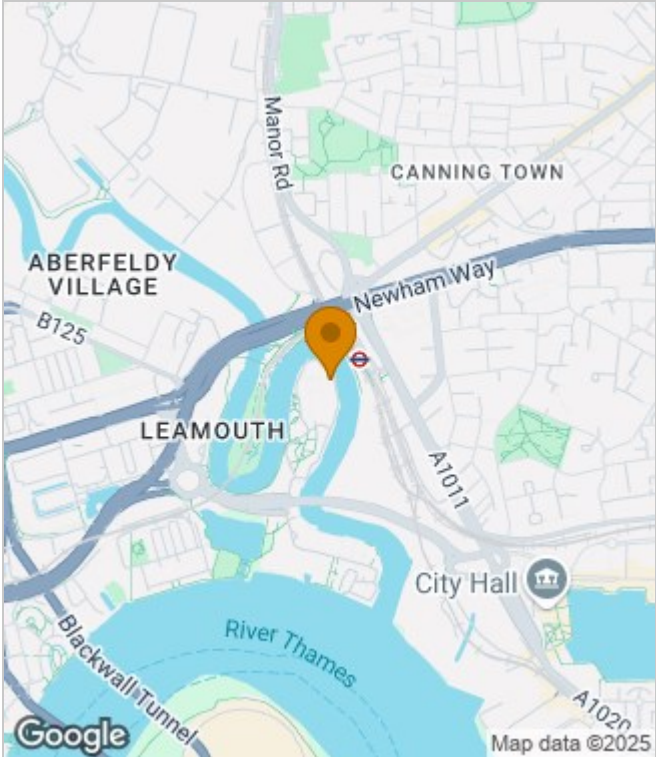


Furnished  
Council Tax Band: C  
Available:

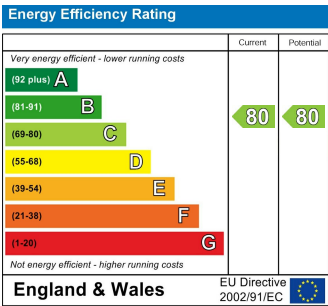
Floor Plans



Area Map



Energy Performance Graph



These particulars, whilst believed to be accurate are set out as a general outline only for guidance and do not constitute any part of an offer or contract. Intending purchasers should not rely on them as statements of representation of fact, but must satisfy themselves by inspection or otherwise as to their accuracy. No person in this firms employment has the authority to make or give any representation or warranty in respect of the property.